



FIBC / CONSTRUCTION BAG

Flexible Intermediate Bulk Containers from Shish SmartPack™

FIBC Bulk Bags, also known as **Flexible Intermediate Bulk Containers** or **Jumbo Bags**, are high-capacity industrial packaging solutions engineered for the **safe transport and storage of dry, flowable bulk materials**. Manufactured using heavy-duty **woven polypropylene (PP) fabric**, these bags are designed to carry materials weighing between **500 kg to 2000 kg** in a single lift, making them ideal for large-scale production and export logistics.

At **Shish SmartPack™**, we manufacture FIBCs in a wide variety of configurations - including **standard 4-loop bags**, **1- and 2-loop lifting designs**, **U-panel**, **baffle**, and **conductive** FIBCs. Our in-house R&D and quality assurance systems allow us to deliver bags that meet **global food, pharma, and export handling standards**, customized precisely to your material type, handling, stacking, and discharge needs.

STANDARD TYPES :



Applications by Industry

Industry	Material Handled
Construction	Cement, sand, lime, fly ash
Agriculture	Grains, seeds, fertilizers, animal feed
Chemicals	Powdered chemicals, additives, pigments
Industrial Raw Material	Polymers, resins, plastic granules, rubber
Food & Pharma	Sugar, salt, starch, flour, API ingredients
Mining & Minerals	Bauxite, iron ore fines, talc, bentonite
Recycling	Scrap, rubber chips, plastics, e-waste

Standard Technical Specifications

Parameter	Range / Options
Fabric	: Woven polypropylene (coated or uncoated)
SWL	: 500 kg to 2000 kg
Safety Factor	: 5:1 (single use) / 6:1 (multi-use)
Dimensions	: Customizable (L × W × H) as per client
Loops	: 1-loop, 2-loop, 4-loop, cross-corner, sleeve
Filling Top	: Open, spout, skirt, duffle, zip-top
Bottom Discharge	: Flat, spout, conical, full drop
Inner Liners	: LDPE, EVOH, aluminium, conductive
Printing	: Up to 3 colors, front & back
Compliance	: BRCGS certified

Key Features & Custom Options

High Strength Construction:

- Made from virgin PP woven fabric with high tensile strength, reinforced seams, and UV-stabilized finishes.

Lifting Options:

- Available with 1-loop, 2-loop, 4-loop, cross-corner, and sleeve lift styles for crane or forklift compatibility.

Discharge Options:

- Flat bottom, discharge spout, conical discharge, full drop-bottom, and rope closure types.

Filling Options:

- Open top, spout top, duffle/skirt top, or zipped cover for dust control and tamper resistance.

Safety Ratings:

- SWL (Safe Working Load) from 500 kg to 2000 kg; safety factor 5:1 (standard use) or 6:1 (reuse/recycling applications).



8 Standard Types of FIBC Bags

- U-Panel Bag (basic standard FIBC shape)
- Circular (Tubular) Bag (seamless side, tubular body)
- Baffle Bag (Q-Bag) (square shape, internal baffles)
- 4-Panel Bag (four stitched panels)
- 1-Loop Bag (single strong lifting loop)
- 2-Loop Bag (two body-integrated lifting loops)
- Conical Bag (cone bottom for complete discharge)
- Ventilated Bag (mesh sides or ventilated fabric)

Global Applications. Local Excellence.

Whether used for domestic dispatches or international container exports, Shish SmartPack™ FIBCs are manufactured to deliver maximum load safety, reduced logistics costs, and product integrity from plant to destination. Our advanced facility in Gujarat offers complete bag conversion, testing, printing, and customization under one roof — ensuring your bulk packaging solution is not only strong, but smart.

Coating & Liner Choices:

- Inner LDPE liners for moisture-sensitive products
- Aluminium liners for food/pharma-grade use
- EVOH multi-layer liners for oxygen-sensitive packaging
- Anti-static coatings for static-sensitive materials

Printing & Branding:

- Multi-color surface printing available for logos, handling instructions, batch data, or export labeling.

Optional Add-ons:

- Document pockets
- Dust-proof seams
- Pallet-less bag bottom loops
- Ventilated fabric for agricultural use
- Baffle bags for cubic stacking and space-saving



PP CORRUGATED SHEET & CUSTOMIZED PRODUCTS

Shish SmartPack™ offers a premium range of **PP Corrugated Sheets** and **Custom Fabricated Boxes**, engineered to meet the highest demands of **modern industrial packaging, reusable logistics, protective storage, and material handling applications**.

Manufactured from **100% virgin polypropylene (PP)**, our hollow sheets feature a **lightweight fluted-core structure** sandwiched between two flat walls, providing excellent **rigidity, durability, and cushioning** without the heavy weight or degradation issues of wood, MDF, or cardboard.

Our product range includes two advanced sheet structures:

- **Twin Wall (3-Ply)** — designed for general packaging, lightweight protection, signage, and agricultural applications.
- **Multi Wall (5-Ply)** — Patented Design — exclusively developed and patented by Shish Industries Limited for **heavy-duty industrial, automotive, and export packaging** needs requiring superior load-bearing, impact resistance, and long lifecycle performance.

Through **precision custom fabrication** — including **box making, partitions, trays, sleeves, foldable crates**, and more — **Shish SmartPack™** transforms PP sheets into **intelligent, reusable, and eco-friendly packaging solutions**.

Our Patented Multi Wall (5-Ply) Technology represents a major innovation in the field of polypropylene sheet manufacturing, providing an **exclusive high-strength, high-durability option** unavailable from standard sheet producers — making Shish SmartPack™ a preferred partner for industrial customers worldwide.

At Shish SmartPack™, we don't just supply sheets — we supply **packaging intelligence** that protects, performs, and lasts.



Applications by Industry

Industry	Application Examples
Packaging	Protective packaging for electronics, pharmaceuticals, food, beverages, and consumer goods. Provides superior resistance against moisture, impact, and chemicals during storage and transportation.
Advertising & Signage	Lightweight, printable sheets used for creating temporary or permanent signage, display stands, point-of-sale displays, and promotional materials.
Automotive	Protective covers, trays, dividers for automotive parts and components during manufacturing, assembly, and shipping. Shields parts from scratches, moisture, and handling damage.
Construction	Temporary floor protection, wall protection, surface safeguarding. Used as reusable panels or formwork for concrete casting on construction sites.
Agriculture	Greenhouse panels, plant protection covers, and temporary fencing solutions. Excellent weather resistance makes them ideal for outdoor farming applications.
Retail	Point-of-purchase displays, sturdy product stands, and visually appealing packaging requiring both aesthetic value and structural strength.
Logistics & Warehousing	Reusable containers, bins, pallet sleeves, and warehouse dividers. Facilitates efficient storage, handling, and transport operations.
Medical & Pharmaceutical	Packaging for medical devices, pharmaceutical products, and sensitive supplies, providing moisture protection and mechanical strength.
Education & Events	Temporary structures, art and craft installations, stalls, partitions for educational institutes, exhibitions, fairs, and events.
Environmental Protection	Erosion control sheets, spill containment barriers, and temporary environmental fencing for construction, restoration, and disaster management sites.

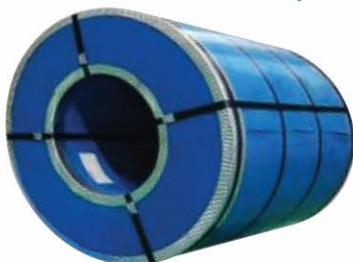
Customized Engineering for Smarter Packaging

At Shish SmartPack™, we believe packaging should do more than just protect — it should **optimize your entire operation**.

That's why we offer **full-service custom packaging solutions** made from our **high-strength, lightweight, and reusable PP Corrugated Sheets** — engineered precisely to your industry's requirements.

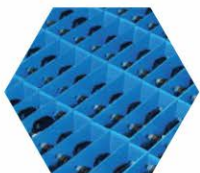
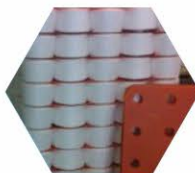
Why Choose Shish SmartPack™ Custom Solutions?

- Faster Design Turnaround
- Material Efficiency
- Reusability
- Technical Expertise
- End-to-End Support



Key Features & Custom Options

- Lightweight and Strong
- Waterproof and Weather-Resistant
- Impact Resistance
- Chemical and Oil Resistant
- Custom Fabrications
- Surface Treatment
- ESD Options
- Color Options
- Branding Options





STUFFEX AIR DUNNAGE BAG

Cargo Load Securement Solutions by Shish SmartPack™

Stuffex™ Air Dunnage Bags by Shish SmartPack™ are engineered to deliver **superior cargo stabilization, load protection, and transport safety** across all modes of logistics — road, rail, sea, and intermodal shipping.

Manufactured using **multi-layer co-extruded polyethylene (PE) inner bladders** combined with **high-strength woven polypropylene (PP) or kraft paper exteriors**, Stuffex™ Air Dunnage Bags are designed to **prevent load shifting, damage, and collapse** during transit.

These lightweight, easy-to-use inflatable bags provide an **economical, reliable, and reusable** solution for filling voids, cushioning cargo, and ensuring goods arrive safely and intact — minimizing product damage, claims, and operational losses.

At Shish SmartPack™, Stuffex™ isn't just an airbag — it's **your first line of defense against cargo damage**.

FEATURES & BENEFITS:



Comprehensive range of accessories to guarantee the best solution for every application



Ease of inflation due to edge valve



Unique lamination for superior performance in durability, moisture and puncture resistance



Made from 100% recyclable materials



Applications by Industry

Industry / Transport Mode	Application Examples
Shipping Containers	Filling void spaces between cargo items inside sea containers; preventing cargo shifting during ocean freight.
Trucks and Trailers	Securing goods in road transport to prevent movement and potential transit damage.
Rail Transportation (Railcars)	Stabilizing cargo during long rail journeys, minimizing risk of damage due to train movement.
Air Cargo	Protecting cargo from movement during turbulence and sudden altitude changes.
Storage and Warehousing	Maintaining stability of stacked goods in warehouses to prevent toppling and damage during storage operations.
Industrial Exports	Securing machinery, drums, coils, and other heavy equipment for export shipments.
Logistics & Distribution Centers	Securing palletized or irregular loads inside distribution facilities.
Construction Materials	Protecting construction items like tiles, cement bags, pipes during transportation and handling.

Standard Technical Specifications

Property	Range / Options
Inner Layer	: Multi-layer Co-extruded Polyethylene (PE)
Outer Layer	: Woven Polypropylene Fabric or Kraft Paper
Burst Pressure	: 0.2 to 0.6 bar (depending on grade)
Standard Sizes	: 36" × 48", 36" × 72", 48" × 96", Custom sizes available
Inflation System	: Standard Fast-Fill Valves or Reusable Valves
Surface Finish	: Smooth or Anti-Slip Coated
Compliance Options	: AAR Certification Available for Rail Use
Working Temperature Range	: -20°C to +70°C
Reusability	: Single-Use and Multi-Use options available
Recyclability	: 100% Recyclable Material

TYPE OF DUNNAGE BAG



What Are Air Dunnage Bags?

Flexible, inflatable cushions designed to fill void spaces and stabilize cargo during transit, preventing load shifts, impacts, and damage.

Types of Stuffex™ Dunnage Bags:

- Paper Dunnage Bags: Best for medium-duty shipments
- Woven PP Dunnage Bags: Best for heavy-duty or moisture-prone shipments
- AAR Certified Dunnage Bags: Approved for rail transportation needs

Key Features & Custom Options

- Robust Construction
- High Load Resistance
- Fast Inflation System
- Reusable Options Available
- Anti-Slip Surface Options
- Custom Sizes
- Multiple Grades
- 100% Recyclable Materials
- Printing Options

How to Select the Right Bag?

- Match bag strength (Light, Medium, Heavy Duty) to cargo weight
- Choose correct size based on void gap and container type
- Confirm compliance needs (AAR rail-grade if necessary)



PP BUBBLE ROLL

Heavy-Duty Surface Protection Solutions by Shish SmartPack™

Shish SmartPack™ introduces premium-grade **Polypropylene (PP) Bubble Rolls / Sheets**, specially engineered for **heavy-duty surface protection, metal coil wrapping, and industrial component safeguarding** during transit, handling, and storage.

Manufactured using **co-extruded polypropylene sheets with rigid air-trapped cushioning cells**, designed for maximum load-bearing surface protection during heavy-duty logistics and industrial operations. These PP Bubble Rolls / Sheets deliver **outstanding impact absorption, scratch resistance, and moisture protection** — outperforming traditional packaging materials in industrial protection applications.

Available in 2.5 mm and 4.0 mm thicknesses, and up to 2.5 meters wide, these products are **commonly known in industries as "Metal Wrap"**, trusted for protecting high-value surfaces across automotive, steel, fabrication, export, and construction sectors.

At Shish SmartPack™, we don't just wrap products — we engineer intelligent surface protection for your industry's toughest challenges.



What is a PP Bubble Roll / Sheet?

PP Bubble Rolls / Sheets are structured air-cushioning layers made from co-extruded polypropylene (PP), providing heavy-duty protection against mechanical shocks, surface damage, and environmental exposure during shipping, handling, and storage. They are commonly referred to in industries as "Metal Wrap" due to their wide use in wrapping and protecting metal coils and surfaces.

Applications by Industry

Industry	Application
Automotive Industry	Protecting trunk lids, decorative plates, body panels, bumpers, mirrors, and chassis parts during shipping and storage.
Packaging Industry	Heavy-duty recyclable boxes, protective wrapping for fragile industrial products, yarn separator plates, collapsible packaging solutions.
Furniture Industry	Edge and surface protection for furniture, glass panels, countertops during transportation and warehousing.
Metal Fabrication	Wrapping polished/coated metal coils (steel, aluminium, copper), rods, pipes, beams, and profiles.
Industrial Equipment	Surface shielding for heavy machinery parts, fabrication components, mechanical assemblies.
Floor Protection Solutions	Temporary flooring protection for construction sites, renovation zones, and heavy traffic areas.
Export Packaging	Heavy-duty wrapping for international shipments of industrial parts, automotive components, and construction materials.
Wire & Cable Industry	Wrapping and side protection for coiled wires, cable drums, and spooled cables during storage and shipment.

Standard Technical Specifications

Property	Value
Material	: Co-Extruded Polypropylene (PP)
Thickness Options	: 2.5 mm and 4.0 mm
Bubble Structure	: Rigid air-trapped cushion cells
Maximum Roll Width	: Up to 2.5 meters (custom sizes available)
Roll Length	: 50 meters to 200 meters (customizable)
Temperature Resistance	: -20°C to +80°C
Chemical Resistance	: Good (against oils, mild chemicals)
Recyclability	: 100% Recyclable Polypropylene



Why Use PP Bubble Rolls / Sheets?

- Superior scratch protection for metal, plastic, painted surfaces.
- Rigid cushioning to absorb mechanical shocks.
- Better moisture and oil resistance compared to traditional wraps.
- Recyclable and sustainable material solution for industrial packaging.
- Saves costs by reducing surface damages and rework requirements.

Key Features & Custom Options

- Industrial Construction
- Superior Surface Protection
- Impact Absorption
- Moisture and Oil Resistance

Where are PP Bubble Rolls / Sheets Commonly Used?

- Wrapping steel coils, aluminium coils, copper coils.
- Protecting automotive body parts (doors, trunk lids, panels).
- Surface protection for fabricated machinery parts during exports.
- Cushioning heavy fragile construction items like marble, granite, tiles.
- Acting as temporary floor protection at construction sites.



STOUT COMPOSITE STRAP

Smart Cargo Securement Solutions by Shish SmartPack™

STOUT™ Composite Straps, from the house of Shish SmartPack™, are next-generation cargo securing solutions engineered to deliver **high strength, durability, flexibility, and cost efficiency** across logistics, manufacturing, construction, mining, and export industries.

Manufactured using **high-tensile polyester yarns encapsulated within a tough polymer coating**, STOUT™ Composite Straps combine the **strength of steel** with the **flexibility and safety of synthetic materials**, creating a new industry benchmark for cargo protection during transport and storage.

Unlike steel strapping, STOUT™ provides **non-corrosive, lightweight, shock-absorbing performance** — eliminating safety hazards like sharp edges, rusting, or cargo surface damage, while maintaining superior tensile strength.

At Shish SmartPack™, with STOUT™, we don't just secure cargo — we build confidence in motion.

Poly Composite straps is made up of strands of polyester fibres, all travelling vertically and coated together by clear polypropylene. The Polypropylene coating increases its resistance to abrasion, yet still allows for slight elongation during transit. Poly Composite straps come in a variety of widths and tensile strengths.

Flexible composite strapping can be utilised for a variety of packing purposes. They have an impact resistance that is seven times higher than steel strapping, making them extremely resistant to extreme weather



Applications by Industry

Industry	Application Examples
Logistics & Transportation	Securing cargo on trucks, trailers, containers, and palletized shipments.
Construction	Bundling and securing building materials such as lumber, steel beams, pipes, and construction machinery.
Manufacturing & Warehousing	Palletizing automotive parts, electronics, industrial equipment, and appliances for storage and dispatch.
Mining & Heavy Machinery	Securing mining equipment, excavators, components, and machinery parts for transport and installation.
Agriculture	Bundling hay bales, securing bulk commodities like grain, cotton, or feed.
Retail & Distribution	Securing palletized goods during warehouse storage and distribution.
Printing & Publishing	Bundling large stacks of newspapers, books, and printing material for distribution.
Electrical & Electronics	Securing delicate electronic equipment and components during transport.
Pharmaceutical & Medical Supplies	Securing sensitive medical supplies and medical devices.
Oil & Gas Industry	Strapping oilfield supplies, heavy pipelines, and offshore rig components.
Textile & Garment Manufacturing	Securing fabric rolls and finished garment pallets for storage and export.
Chemical & Petrochemical	Securing drums, IBC containers, and chemical product pallets.
Aerospace & Aviation	Securing fuselage sections, parts, and sensitive assemblies during shipping and installation.

Standard Technical Specifications

Property	Range / Options
Material	: High-Tenacity Polyester Yarn + Polymer Coating
Tensile Strength Range	: 400 kg to 2000+ kg
Strap Width Options	: 13 mm, 16 mm, 19 mm, 25 mm, 32 mm
Surface Finish	: Smooth, Scratch-Resistant
Elongation Under Load	: 8–12%
Temperature Resistance	: -40°C to +80°C
UV Resistance	: Optional UV-stabilized grades available
Color	: White / Black (Custom colors available)
Recyclability	: 100% recyclable (PP/PE based)



Benefits of STOUT™ Composite Straps:

- No rust, no corrosion risk
- No sharp edges — safer for operators
- Lightweight and easy to handle
- Cost-effective per-use compared to steel
- Recyclable — supporting green logistics

Where to Use Composite Straps:

- Export container shipments
- Road and rail cargo security
- Pallet bundling for heavy goods
- Equipment and machinery transport
- Hazardous material securing (using rated straps)

Key Features & Custom Options

- | | | | |
|-----------------------------|-------------------------------|-----------------------------|------------------------------|
| - Strength and Reliability | - Flexibility and Ease of Use | - Non-Corrosive Performance | - Cost-Efficient Alternative |
| - Weather and UV Resistance | - Safe Handling | - Scratch-Resistant Surface | - Customization |